

# TRUFIELD™ POLE TOP CONCEALMENT SHROUD SERIES



PART # AF000380 SERIES

## CONCEALMENT SOLUTIONS

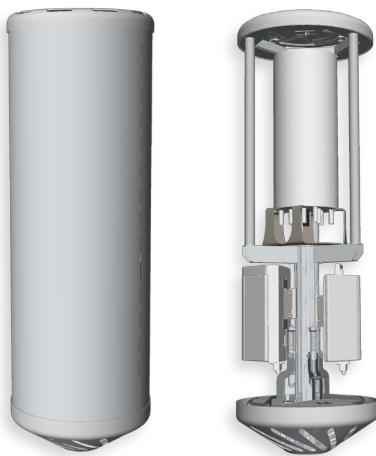
Our portfolio of concealment solutions, designed to service wireless carriers and neutral host providers, includes a variety of pre-configured options as well as custom integrations to meet customer-specific applications. With the acquisition of Schroff Technologies (Schrofftech), RFI is able to leverage a long-standing track record and outstanding operational capabilities to fully support any project.

### INTRODUCING TRUFIELD™ TECHNOLOGY

Designed especially for 5G networks, our best-in-industry engineers have developed TruField™, a first of its kind, patent protected technology for RF Industries' concealment solutions. TruField has been tested by independent labs and wireless carriers to have far superior RF transparency qualities as compared to traditional concealment shrouds in the market today that degrade network performance and limit coverage.

TruField is band agnostic and achieves true RF transparency with less than 0.2 dB loss at any angle of incidence up to 60° from low band, mid band (C-Band) to mmWave frequencies. TruField utilizes a proprietary outer shell material developed by Saint-Gobain, our exclusive strategic partner. The result? Clean RF transmission with superior signal strength and overall RF coverage.

TruField's unique, lightweight fabric is made of a self-cleaning, hydrophobic material that repels water, mold, and mildew which keeps the shroud virtually maintenance free. This means lower overall costs.



(Example typical configuration - other configurations available)

### FEATURES

- Band agnostic
- True RF transparency with less than 0.2 dB loss at any angle of incidence up to 60° from low band, mid band (C-Band) to mmWave frequencies
- Multi-carrier, multi-tenant ready
- Lightweight and easy to install with a variety of mounting options
- Unzips easily for full 360-degree access for quick radio or antenna upgrades - No tools required
- Climate resilient, durable construction, and extreme UV resistance
- Self-cleaning, hydrophobic material that naturally repels water - no cleaning or maintenance required
- Proprietary continuous air flow system
- Modular construction easily adapts to future configurations
- Colors - Grey, Black, Brown, Green, Beige (Other colors available upon request)

### PHYSICAL SPECIFICATIONS *(varies by configuration, additional sizes available)*

Part Number	Dimension Range	Weight Range (without radios)	Operating Temperature Range	Storage Temperature Range
AF000380 Series	60" to 90"H x 18" to 24"D	45 to 75 lbs. (Up to 400 lbs max with radios)	Min -30° C to Max 46° C*	Min -40° C to Max 70° C

\*Subject to radio specifications

## INTEGRATED SOLUTIONS

Save time and cost on installation with our preconfigured radio equipment, connectivity, and line power kits.

For those instances where a custom solution is required, RF Industries engineers are able to quickly develop a customized solution to meet your unique specifications.

Our engineers have expertise in all four key engineering disciplines including electrical engineering, mechanical engineering, thermal engineering, and RF engineering allowing us to optimize the most robust solution into the smallest footprint.

### PART # AF000380 SERIES RADIO EQUIPMENT KIT OPTIONS\*

*(Radios and Canister Antennas supplied by customer)*

Any TruField concealment solution can be configured to fit any small cell or current mmWave radio on the market. Example radios that have been used include:

- Nokia Airscale micro radios
- Ericsson 220x or 440x series
- Nokia AEWE+AEWD
- Ericsson 6701
- Samsung AT1K0x

*\* Depending on the final shroud system size, 3 to 12 small cell radios and/or 3 to 9 5G mmW radios or combination of both can be concealed in single or multi-carrier configurations.*

## PRECONFIGURED RADIO EQUIPMENT KITS INCLUDE

<b>Radio Brackets</b>	All brackets to mount equipment into shroud for a given set
<b>Power Distribution Unit</b>	PDU for this equipment set, incl. internal power wiring and switches
<b>Internal RF Cabling</b>	All internal RF cables for selected equipment if applicable
<b>Internal Fiber Cables</b>	All internal fiber cables for selected equipment if applicable
<b>Cooling System</b>	Internal cooling system (fans, temp. sensors, control) for selected equipment if applicable

*Other configurations available upon request.*

## ABOUT RF INDUSTRIES

RF Industries (RFI) provides a portfolio of small cell concealment products and integrated solutions to facilitate the rapid deployment of 4G and 5G infrastructure along with the flexibility and creativity to meet the most challenging small cell deployments.

Our high-touch customer approach allows us to be responsive, accessible and hands-on when needed, every step of the way. Unlike large organizations, you will always be our number one priority. Our end-to-end support promises personal attention, guidance, and partnership all the way through site deployment.

RFI's unique flexibility also gives us a competitive advantage. As an agile business, we are able to identify and react to challenges quickly and easily, resulting in a smoother overall customer experience



**RF INDUSTRIES**

rfindustries.com

800.233.1728

7610 Miramar Road  
San Diego, CA 92126

